

ReadyVIS

Asset Management and Inspection Services





DRONE SERVICES

- Storm response and damage assessment
- Lead line placement over difficult terrain
- Pre-construction site survey and mapping
- Standard line inspection survey
- Vegetation management survey
- Construction progress updates



PA

Managing transmission and distribution assets is challenging. Mandatory inspections of high voltage lines is often dangerous, time consuming and expensive. With drones, we can provide safer, more efficient cost saving options for utility customers. With high quality data stored in an easy to use interface, decision makers can get back to the important things - making decisions.

We have an established drone team with experience flying T&D power lines. We don't just gather the data. We provide a full service, turnkey deliverable complete with conditional assessment of identified issues and recommendations for repair.

All of our services are executed with certified journeyman linemen or qualified project managers.

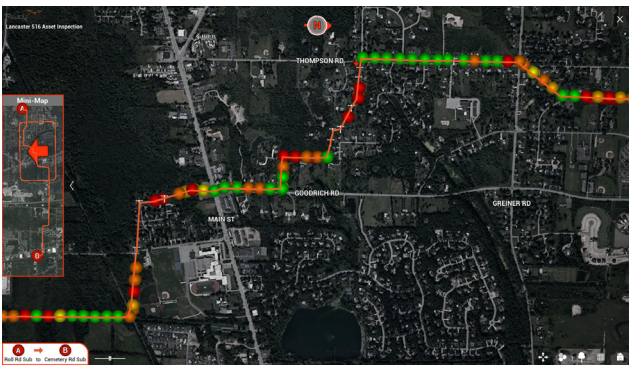


STORE AND MANAGE DATA IN ONE EASY TO NAVIGATE USER INTERFACE

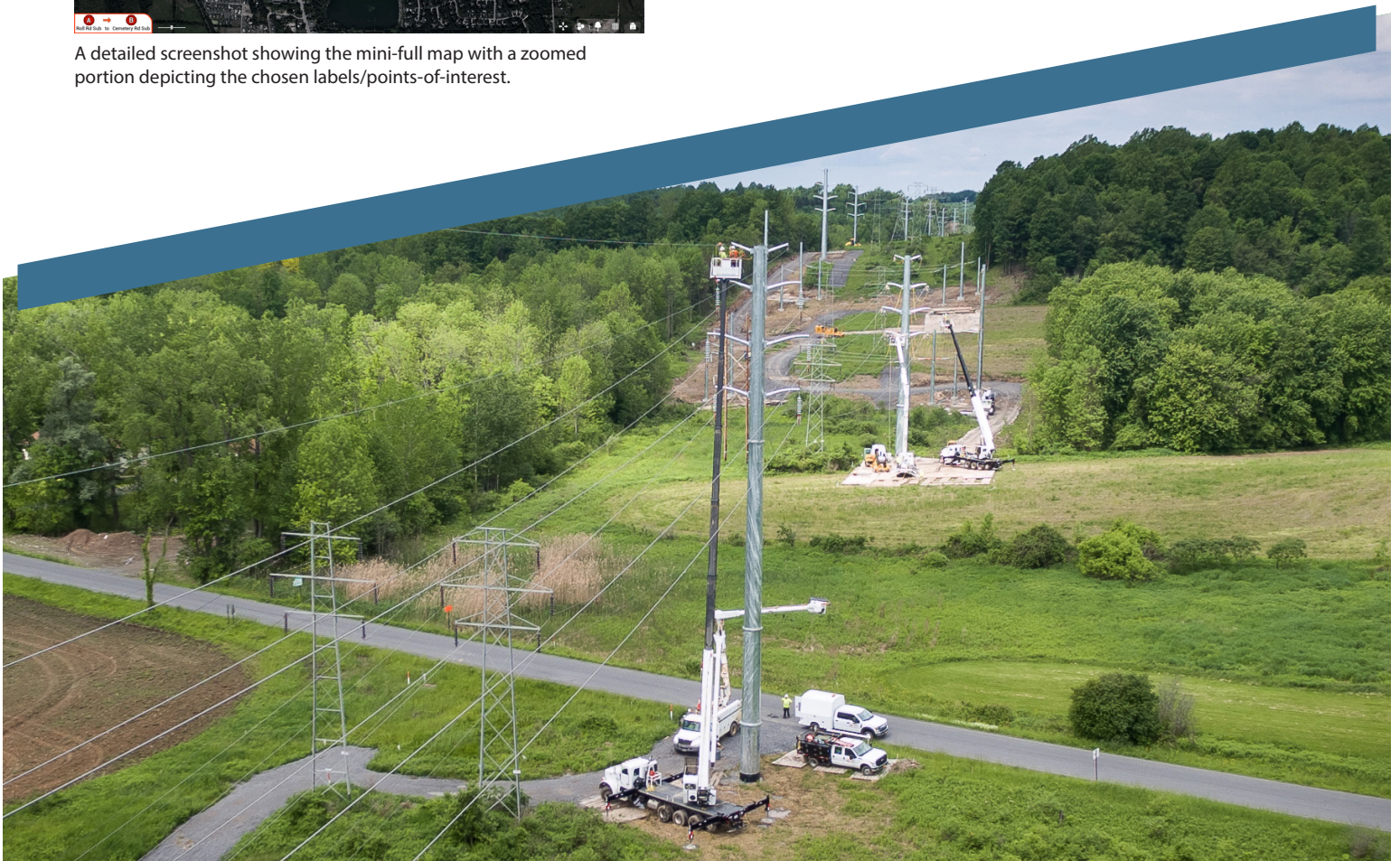
Offering drone services isn't the best part. Providing decision makers with usable data is what our customers expect. With this in mind, ReadyVis was developed by Passero Associates, a leading engineering firm that specializes in providing aerial imaging, photogrammetry, and 3D modeling through the use of customized interactive software deliverables.

ReadyVIS

- Showcase HD media from the drone, directly accessible within the app
- User-friendly interface with satellite imagery showing street and point-of-interest labels
- Various viewing modes and user preference settings
- Easy mapping and directions to asset locations
- Simple interface for filtering data
- Automated analysis of danger trees
- Asset inspection data viewable in-app, including:
 - Structure identification
 - Precise asset locations
 - High definition drone images and videos
 - Deficiency analysis and priority allocation
 - Estimated costs for repair or replacement
 - Easily track asset deterioration over time



A detailed screenshot showing the mini-full map with a zoomed portion depicting the chosen labels/points-of-interest.





O'CONNELL
ELECTRIC COMPANY

DAVE EMMI
MANAGING DIRECTOR
TRANSMISSION & DISTRIBUTION
585-295-6805